

DYKEM®

Marking Systems



THE MARK OF EXCELLENCE™

Paint Markers

Temporary Ink Markers

Speciality Markers

Layout Fluids

Paint Markers

BRITE-MARK® Valve Action Paint Markers



Typical Applications

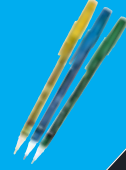
- Identifying inventory
- Work in-progress
- Identifying tools
- Welding/fabricating metal
- Finished products
- General purpose felt tip paint markers that write on virtually any surface
- Quick drying, oil-based paint withstands indoor and outdoor conditions without fading, chipping or losing opacity
- Valve action mechanism prevents paint in barrel from drying when cap is left off
- Formula is not xylene-based
- Available in different tip sizes and colors
- Drying time: 25-35 seconds

BRITE-MARK® Fine

- Permanent fine fiber tip valve action paint marker, ideal for the easy labelling of small parts

Product Code and Color

41001	Blue	41010	Orange	41016	Silver
41003	Black	41002	Red	41045	Violet
41008	White	41004	Green		
41006	Yellow	41014	Gold		



BRITE-MARK® 916 Medium

- Permanent medium fiber tip valve action paint marker

Product Code and Color

84001	Blue	84006	Red	84009	Pink
84002	Black	84007	Green	84010	Brown
84003	White	84051	Gold	84008	Lt Blue
84004	Yellow	84050	Silver	84022	Lt Green
84005	Orange	84019	Violet		



BRITE-MARK® 40 Medium

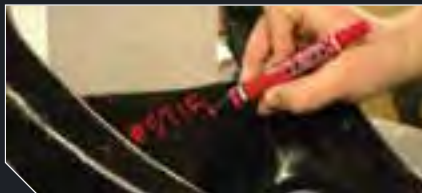
- Permanent medium fiber tip valve action paint marker. Clip cap screw for secure closure. Threaded barrel allows the marker to be screwed into a jig or apparatus

Product Code and Color

40001	Blue	40010	Orange	40016	Silver
40003	Black	40002	Red	40045	Violet
40008	White	40004	Green	40009	Pink
40006	Yellow	40014	Gold	40007	Brown



BRITE-MARK® H₂O Water-Based



Typical Applications

- Identifying inventory
- Work in-progress
- Identifying tools
- Welding/fabricating metal
- Finished products

- General purpose felt tip paint markers that write on virtually any surface
- Water-based permanent paint
- Low Odor / Low VOC
- No hazardous air pollutants (HAP's)
- Valve action mechanism prevents paint in barrel from drying when cap is left off
- Available in different colors
- Drying time: 60-90 seconds

BRITE-MARK® H₂O Medium

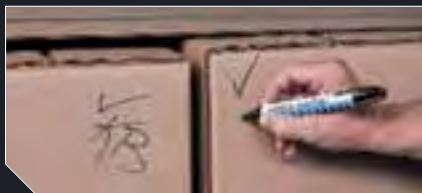
- Permanent medium fiber tip valve action water-based paint marker.

Product Code and Color

91603	Blue	91425	White
91426	Black	91604	Orange
91602	Green	91428	Red
91427	Yellow		



TUFF GUY™ General Purpose



Typical Applications

- Shrink wrap and plastics
- Machine shops

- General purpose marker
- Highly resistant to coolants and cutting fluids
- Not a xylene based formula
- Valve action mechanism prevents ink in barrel from drying when cap is left off
- Threaded barrel allows the marker to be screwed into a jig or apparatus
- Drying time: 45 seconds - 1 minute

TUFF GUY™ General Purpose Marker

Product Code	Color	Product Code	Color
44203	Black	44175	White
44819	Red	44177	Green
44401	Yellow	44179	Blue



TEXPEN®/DALO® Steel Tip Paint Markers



Typical Applications

- Structural steel
- Steel stockholders
- Construction sites
- Identifying rusty / oily / greasy tools
- Identifying parts that are stored outside
- Stainless steel-ball tip - no risk of tip wear even if you are writing on rough concrete or rusty metal
- Easily writes through oil, grease and water
- Writes at all angles, even upside down
- Paint withstands extreme weather conditions without losing legibility or brightness
- Available in different tip sizes and colours
- TEXPEN® is a smaller version of the DALO®
- Drying time: 25-35 minutes

TEXPEN®

- Steel tip paint marker - Medium Barrel

Fine Tip

Product Code and Color

16030		Black	16080		White
16010		Blue	16060		Yellow
16040		Green	16100		Orange
16020		Red			

Medium Tip

Product Code and Color

16033		Black	16083		White
16013		Blue	16063		Yellow
16043		Green	16103		Orange
16023		Red			

Broad Tip

Product Code and Color

16034		Black	16084		White
16014		Blue	16064		Yellow
16044		Green	16104		Orange
16024		Red			



DALO®

- Steel tip paint marker - Large Barrel

Medium Tip

Product Code and Color

16033		Black	16083		White
16013		Blue	16063		Yellow
16043		Green	16103		Orange
16023		Red			

Broad Tip

Product Code and Color

16034		Black	16084		White
16014		Blue	16064		Yellow
16044		Green	16104		Orange
16024		Red			



Temporary Ink Markers

RINZ OFF® & SUDZ OFF® Temporary



Typical Applications

- Quality control
- Work in - progress
- Automotive industry
- Perfect for temporary writing on non-treated, non-painted metal surfaces which require ink that can be removed with water or with detergents with a pH of ≤ 10
- General purpose xylene-free temporary ink markers
- Ideal for quality control
- No ghosting or bleed-through occurs when removed marks are painted over
- Drying Time: 25-35 seconds

RINZ OFF® Water Removable

- Marks can be removed with water

Medium Tip

Product Code and Color

91109		Black	91106		Red
91105		Blue	91757		Yellow
91108		Green	91709		White

Broad Tip

Product Code and Color

44109		Black	44106		Red
44105		Blue	44757		Yellow
44108		Green	44709		White



SUDZ OFF® Detergent Removable

- Marks can be removed with mild detergent (pH higher than 10)

Medium Tip

Product Code and Color

91985		Black	91939		Red
91938		Blue	91694		Yellow
91371		Green	91146		White

Broad Tip

Product Code and Color

44985		Black	44939		Red
44938		Blue	44694		Yellow
44371		Green	44146		White



Speciality Markers

STRIKE-MARK™



Typical Applications

- Packaging
- Marks cardboard, plastic, rubber, metal, and many other surfaces

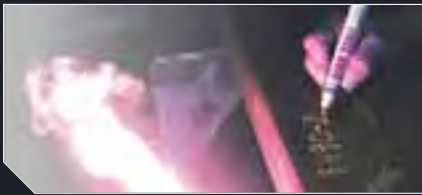
STRIKE-MARK™ Fast Dry Marker

- Over 12 times the writing life compared to other permanent ink markers
- Drying time: less than 10 seconds on most surfaces
- Valve action tip allows dried out tips to re-inked...no waste!

Fine Tip		Medium Tip	
Product Code and Color		Product Code and Color	
33682	Black	16033	Black
33731	Blue	16013	Blue
33734	Green	16043	Green
33736	Red	16023	Red



HIGH TEMPERATURE MARKERS



Typical Applications

- Components exposed to high temperatures
- Ideal for marking glass, metal and ceramics
- Electronics industry
- Ideal for marking on surfaces that are exposed to extreme high temperatures
- Mark becomes fused and permanent after heat is applied – up to 2000°F
- Ideal for marking glass, metal and ceramics
- Paint withstands extreme weather conditions without losing legibility or brightness

HIGH TEMP 44

- Permanent fiber tip valve action paint marker
- Valve action mechanism prevents paint in barrel from drying when cap is left off
- Threaded barrel allows the marker to be screwed into a jig or apparatus
- Drying time: 45 seconds -1 minute

Product Code and Color		Product Code and Color	
44250	Black	44219	White
44094	Blue	44424	Yellow
44266	Green		



HIGH TEMP TXP

- Stainless steel-ball tip - no risk of tip wear even if you are writing on rough concrete or rusty metal
- Easily writes through oil, grease and water
- Writes at all angles, even upside down
- Drying time: 25 -30 minutes

Fine Tip		Medium Tip	
Product Code and Color		Product Code and Color	
17030	Black	17033	Black
17080	White	17083	White
17060	Yellow	17063	Yellow



HIGH PURITY MARKERS



Typical Applications

- Marking stainless steel
- Ideal for welding
- Aerospace industry
- Ship/boat/marine industries
- Used where surface degradation, contamination or other adverse effects are a concern
- Paint will not contaminate or adversely affect the surface being marked
- Meets the requirements of the US Energy Research & Development Administration "Nuclear Grade" for black, red, yellow and white inks.

HIGH PURITY

- Permanent fiber tip valve action paint marker
- Valve action mechanism prevents paint in barrel from drying when cap is left off
- Drying time: 45 seconds -1 minute

Fine Tip		Medium Tip	
Product Code and Color		Product Code and Color	
33404	Black	44404	Black
33301	Red	44534	Blue
33729	White	44301	Red
		44729	White
		44916	Yellow



HIGH PURITY TXP

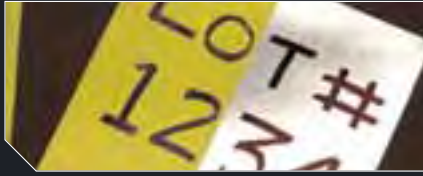
- Stainless steel-ball tip - no risk of tip wear even if you are writing on rough concrete or rusty metal
- Easily writes through oil, grease and water
- Drying time: 25 -30 minutes

Medium Tip - Product Code and Color

17473	Black
17463	White
14143	Yellow



BLEED THRU



Typical Applications

- Ideal for fabricating structural steel or layout work where marks are required to bleed through a primer coat covering the marks

- Marks bleed through when painted over with oil/solvent based paints and primers
- Makes permanent marks on plastic, metal, glass, ceramics, and most non-porous surfaces.
- Fast drying permanent ink marks on almost any surface
- Can be used for identification purposes
- Chisel tips are replaceable to assure complete use of paint in each marker
- Valve action mechanism prevents ink in barrel from drying when cap is left off
- Threaded barrel allows the marker to be screwed into a jig or apparatus

BLEED THRU™

Product Code and Color

44541 ■ Black



LAYOUT FLUID / REMOVER / DETECTORS

STEEL BLUE®



Typical Applications

- Provides a deep, uniform color that prevents glare so scribes appear clear, sharp and precise

- Resists cracking and chipping
- Add practically no thickness to work piece
- Dries in minutes
- Reduces eye strain
- Toluene free

STEEL BLUE®

Product Code Size

80000	Aerosol 16 oz.
80200	Felt Applicator 2 oz.
80300	Brush-In-Cap 4 oz.
80400	Brush-In-Cap 8 oz.
80600	Bottle 930 mL



REMOVER & CLEANER



Typical Applications

- Prepares surfaces for better adhesion of layout fluids and removes layout fluids when project is complete

- Prepares metal surfaces
- Dries in minutes
- Does not contain toluene or chlorinated solvents

REMOVER & CLEANER

Product Code Size

82038	Aerosol 16 oz.
82638	Bottle 930 mL
82738	Bottle 1 Gallon
82838	Pail 5 Gallons
82938	Drum 55 Gallons



HI-SPOT BLUE



- Detects high spots on bearings, gears and other close fits
- Blue, soft, uniform paste spreads easily and evenly
- The film remains pliable and transferable and in good condition for months
- Saves time and money in surface scraping work

HI-SPOT BLUE

Product Code	Size
83307	.55 oz Tube



CROSS CHECK™



Typical Applications

- Quality control and warranty work

- Visually detects loose nuts and bolts
- Tamper proof torque mark
- Highly visible fluorescent orange color
- Excellent adhesion
- Safe for most surfaces
- Provides warranty protection

CROSS CHECK™

Product Code	Color	Size
83314	Orange	1 oz Tube



Merchandising

CANISTERS

- Come filled and ready to display
- Compact footprint:
4" (w) x 6.75" (h)
- BRITE-MARK® display holds:
12 Yellow
12 Black
12 White
- * STRIKE-MARK™ display holds:
36 Black

HI-SPOT BLUE

Product Code	Pack Description
84060	BRITE-MARK® Display (Filled)
84080	STRIKE-MARK™ Display (Filled)
84061	BRITE-MARK® Display (Empty)
84081	STRIKE-MARK™ Display (Empty)



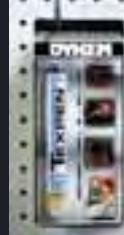
BLISTER CARDS



BRITE-MARK® Blister Card

Product Code and Color

84101	Blue
84102	Black
84107	Green
84104	Yellow
84103	White
84105	Orange
84106	Red



TEXPEN® Blister Card

Product Code and Color

16018	Blue
16038	Black
16048	Green
16068	Yellow
16088	White
16108	Orange
16028	Red

DISPLAY

- Adds visibility to markers
- Constructed with light weight, corrugated cardboard
- Configured to hold any marker box in the DYKEM® marker line
- Compact footprint:
8" (w) x 11.25" (D) x 11" (h)

The DYKEM® Pen display is shipped empty

PEN DISPLAY

Product Code	Pack Description
84999	Pen Display



SHOWCASE

- Showcases the variety of DYKEM® marking systems line
- Comes stocked with product and 50 sheets of literature
- Footprint with Literature:
12.5" (w) x 10" (D) x 17.5" (H)
- Footprint without Literature:
12.5" (w) x 10" (D) x 14.5" (H)

PEN SHOWCASE

Product Code	Pack Description
84997	Pen Showcase



DEMO KIT

- Allows for demonstration of the entire DYKEM® product line
- Comes with product and demonstration supplies and instructions

PEN DEMO KIT

Product Code	Pack Description
84998	Pen Demo Kit



For further information on DYKEM® products, visit us at www.dykem.com or call us direct at 800.443.9536

Distributor Information



Olathe, Kansas 66061 • USA • Fax: 913.397.8761 • Phone: 913.397.9889

LI338
080923